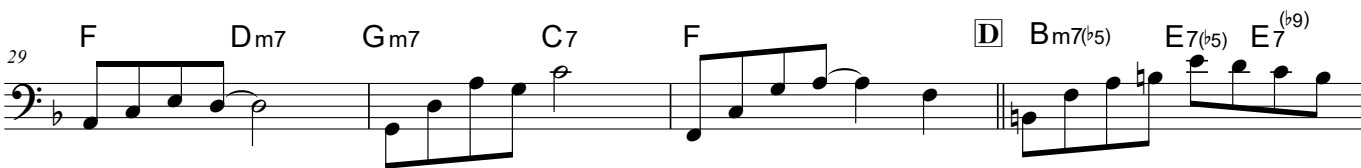


Bass

ETERNAL PRAY
Full Orch. Version

池田公生

♩ = 66 Bm7(b5) E7(b5)E7(b9) Am7(b5) D7(b5)D7(b9) Gm7(b5) C7(b5)C7(b9) FM7 Gb7



ETERNAL PRAY

41 $\begin{matrix} B\flat \\ C \end{matrix}$ Am7 D7 Gm7

45 $\begin{matrix} Gm7 \\ C \end{matrix}$ Am7 D7⁽¹³⁾ D7^(b13) Gm7 C7

49 Am7 D7 Gm7 C7 $\begin{matrix} D\flat M7 \\ D \end{matrix}$ GbM7 F $\begin{matrix} F \\ A \\ F \end{matrix}$

54 BbM7 $\begin{matrix} D \\ B\flat \end{matrix}$ EbM7 $\begin{matrix} G \\ E\flat \end{matrix}$

58 AbM7 Abm6 Gm7 F#m7 B7

62 EM7 Ebm7 Ab7 DbM7 Bbm7 Am7 D7

66 Gm7 $\begin{matrix} Gm7 \\ C \end{matrix}$ Eb7 2. D.S.

70 Am7(b5) D7 Gm7 C7 Am7(b5) D7 Gm7 C7

74 DbM7 GbM7 F FM7(#11)

78